

# Welcome to Protocol Discussion 1!

- **Today's Playlist**

- a boy named pluto – Hailey Knox
- Hannah – COIN
- Moon Rider – Jai Wolf, Wrabel



- **Upcoming BMES Events**

- Technical Presentation Workshop – Monday 1/25 6:30 – 8:30 PM
- Pfizer Inforsession – Wednesday 1/27 6:00 – 7:00 PM

# Protocol Discussion 1

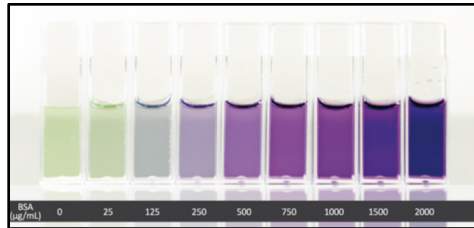
BMES Cell Team

Winter 2021



# Outline

- In Breakout Rooms:
  - BCA Assay Standard Curve
  - Interview Assignment
- Will Review as a Group:



## Part 1: BCA Assay Absorbance Analysis

- For this section:
  - Reference the **Protocol Walkthrough 1 Worksheet** for step-by-step instructions on the data analysis
    - Cell Team site → Labs tab
  - Complete your data analysis by downloading and making a copy of the Google Sheet
    - [https://docs.google.com/spreadsheets/d/1t5jw-l20OnLWWhHnSpvBAntOPoBh98pWFKldf\\_en7jdY/edit#gid=0](https://docs.google.com/spreadsheets/d/1t5jw-l20OnLWWhHnSpvBAntOPoBh98pWFKldf_en7jdY/edit#gid=0)

## Part 1: BCA Assay Absorbance Analysis

- After finding the protein concentration of PC9 and PC9 AXL KO, there are a couple of follow-up questions for you to think about.
- Breakout Rooms
  - Justin and I will cycle through the Breakout Rooms to see if there are any steps where you guys are getting stuck
  - Can have one person screen share as they go through the steps
    - Everyone else follows along as they work on it

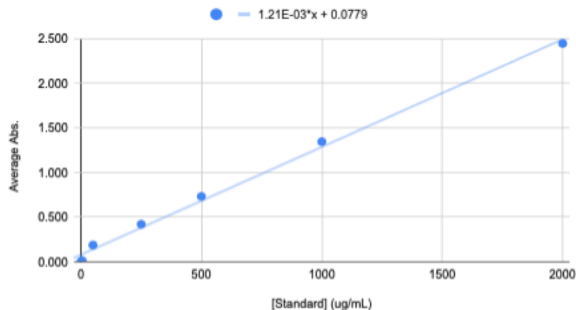
## Part 2: Interview Assignment

- If you finish Part 1 and would like some additional practice, I have attached questions I had on a recent Interview Assignment
- What is an Interview Assignment?
  - New strategy companies are using to screen candidates
  - Assesses the candidate's technical skills for the role
  - This one focuses on the preparation of a diluted solute

# Part 1 Review

STEP 9

Average Abs. vs. [Standard] (ug/mL)



STEP 11

Sample Type

Average Abs.

[Sample] (ug/mL)

PC9

0.1535

62.47933884

PC9 AXL KO

0.1865

89.75206612

## Part 1 Review

